

The background of the page is a photograph of an elevator interior. The walls are covered in vertical, light-colored slats that create a rhythmic pattern. Several square recessed lights are embedded in the ceiling and walls, casting a warm, golden glow. The perspective is from a low angle, looking up towards the ceiling, which emphasizes the height and architectural details of the space.

# MATERIALS AND ACCESSORIES

KONE Design Collection

# CREATING THE PERFECT ELEVATOR

When it comes to creating a consistent look and feel throughout your building, elevators play a key role. By freely combining KONE's flexible and versatile selection of materials and accessories, you can create an elevator interior that matches your building's design perfectly.

## HOW TO CREATE YOUR CUSTOM ELEVATOR DESIGN

### 1 Choose the combination of wall, floor, and door material

Our wide range of available choices ensures that you can find the perfect combination to match your building's design, budget, and intended use requirements. For example, if durability and comfort are important, stone flooring is long-lasting and maintains its appearance even under heavy use, while colored or wood laminate wall finishes help to create a warm ambience inside the car. For a more exclusive look and feel, our new patterned steel and 3D glass finishes can really make your elevator stand out.

### 2 Select your ceiling design

KONE offers a wide range of different ceiling designs, equipped with modern and innovative lighting solutions that help create just the right atmosphere inside the elevator. Our ceilings are designed to give the best possible lighting quality while avoiding glare, ensuring every elevator trip is a pleasant and safe one. KONE's lighting solutions are also energy efficient – our LED lights use 80% less energy than traditional halogen lights.

### 3 Choose your accessories

Our accessories are designed to increase convenience for passengers, and include options such as handrails, seats, car operating panels, information screens, and tenant directories. KONE accessories have been designed to meet the specific requirements of different users and building types. For example, we offer special graphics designed for car operating panels in senior housing and children's hospitals, as well as customizable solutions for office, hotel, and retail environments.

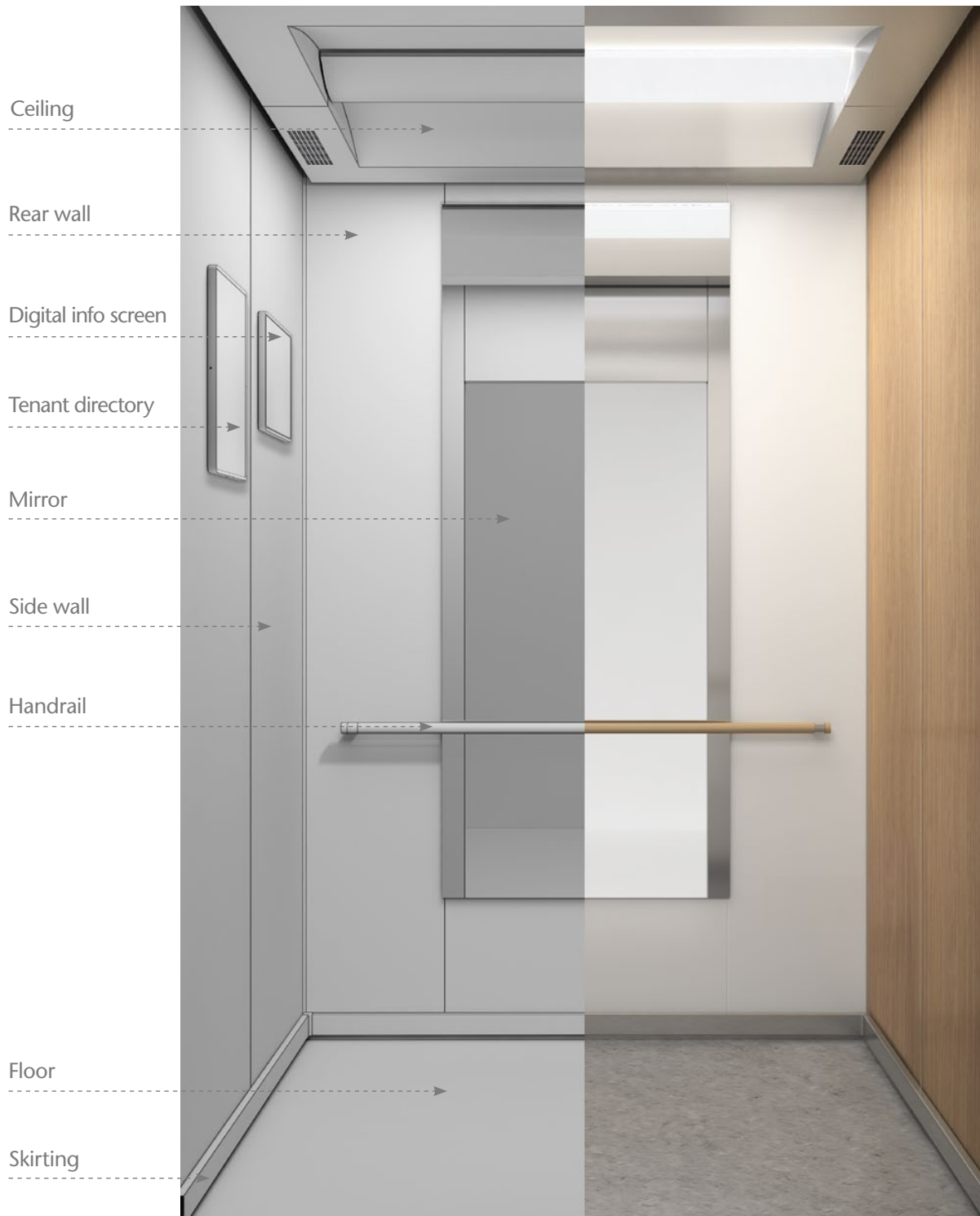
## MATERIALS AND ACCESSORIES FOR ALL PURPOSES

This catalog presents our complete selection of elevator car interior materials and accessories. The options are grouped into three categories: basic, standard, and premium. Premium materials and accessories have been created using exclusive materials and components.

For more design inspiration, take a look at the KONE Design Collection car interiors at [www.kone.XX/XXXX](http://www.kone.XX/XXXX). Consult your KONE sales contact to discuss your final interior selection and to get any additional information and support you may need.

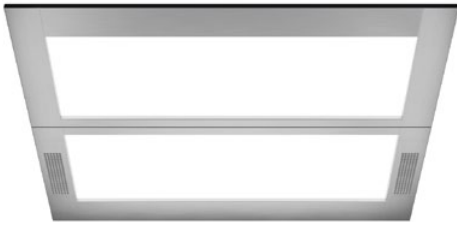


## MIX & MATCH CAR ELEMENTS

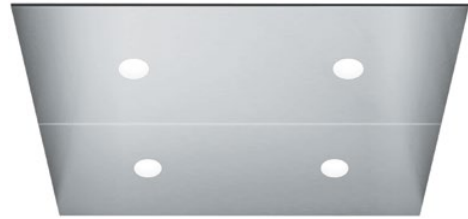


# Accessories and materials

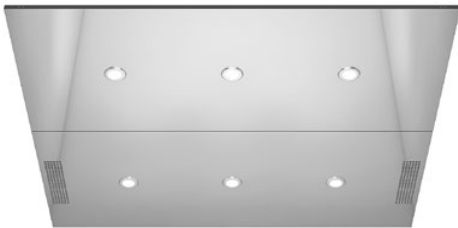
## CEILING



**CL71**  
 Lighting: LED tubes  
 Finishing: PP10 White painted RAL9010   
 ST4 Silver brushed stainless steel



**CL80**  
 Lighting: LED spot  
 Finishing: PP10 White painted RAL9010   
 ST4 Silver brushed stainless steel   
 MP1 Silver mirror polished stainless steel



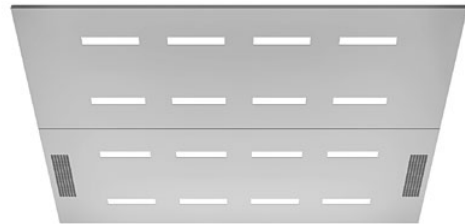
**CL88**  
 Lighting: LED spot  
 Finishing: ST4 Silver brushed stainless steel   
 MP1 Silver mirror polished stainless steel   
 MP2 Golden mirror polished stainless steel



**CL91**  
 Lighting: LED tubes  
 Finishing: PP10 White painted RAL9010   
 ST4 Silver brushed stainless steel



**CL95**  
 Lighting: LED tubes  
 Finishing: ST4 Silver brushed stainless steel   
 MP1 Silver mirror polished stainless steel



**CL103**  
 Lighting: LED tubes  
 Finishing: PP10 White painted RAL9010   
 ST4 Silver brushed stainless steel

## HANDRAILS

### Aluminium



**HR31**  
 Round aluminium tube  
 with black plastic end caps



**HR34**  
 Round curved aluminium tube  
 with black plastic end caps

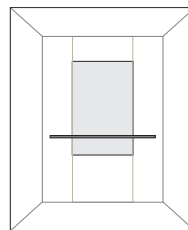


**HR24R**  
 Curved ends silver brushed

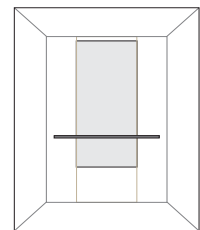


**HR61**  
 Round silver brushed

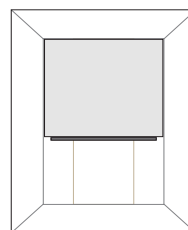
## MIRRORS



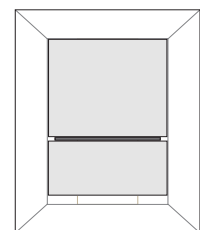
**MR1**  
 Partial width, partial height



**MR1**  
 Partial width, medium height



**MR1**  
 Full width, partial height



**MR1**  
 Full width, full height

WALLS

Painted steel



PP10\*  
Pure White



PP18\*  
Linen Brown

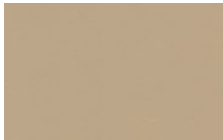


PP20\*  
Wool Gray

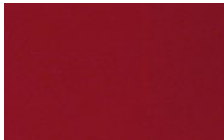


PP22\*  
Fresh Green

Metallic painted steel



METP1\*  
Champagne



METP2\*  
Cosmo Red

Brushed stainless steel



F1\*  
Asturias Satin



ST4\*  
Silver



ST5\*  
Copper

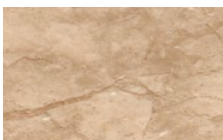


A (AISI316)\*  
Acid proof

\* Available also for front wall

FLOORS

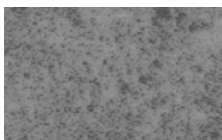
PVC



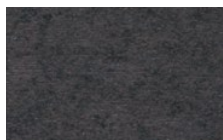
D-6  
Light Brown



D24  
Moon White



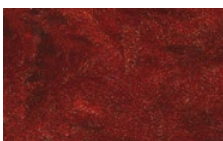
D25  
Rocky Gray



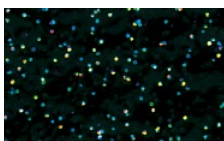
D26  
Lava Stone



D27  
Saturn Brown



D29  
Mars Red



D30  
Galaxy



D31  
Bamboo

Patterned PVC



DG01  
Brown



DG02  
Chessboard



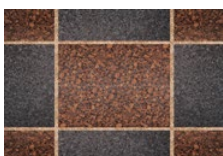
DG03  
Puzzle soft



DG04  
Puzzle bright



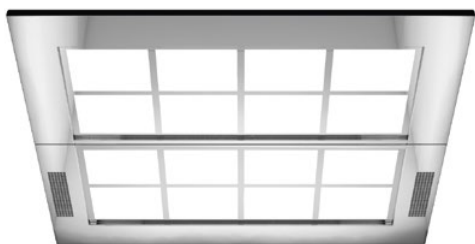
DG05  
Legno



DG06  
Blusher

## Accessories

## CEILING

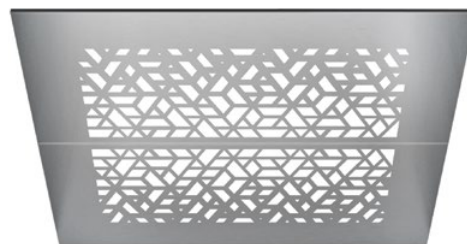


CL70

Lighting: LED tubes

Finishing: ST4 Silver brushed stainless steel

MP1 Silver mirror polished stainless steel



CL72

Lighting: LED tubes

Finishing: PP10 White painted RAL9010

ST4 Silver brushed stainless steel



CL97

Lighting: LED square

Finishing: ST4 Silver brushed stainless steel

MP1 Silver mirror polished stainless steel

MP2 Golden mirror polished stainless steel



CL195

Direct lighting: LED spot

Indirect lighting: LED strip

Center panel finishing: PP10 White painted RAL9010

Back panel finishing: PP10 White painted RAL9010



CL196

Direct lighting: LED spot

Indirect lighting: LED strip

Center panel finishing: PP10 White painted RAL9010

Side panel finishing: PP10 White painted RAL9010

ST4 Silver brushed stainless steel

MP1 Silver mirror polished stainless steel

MP2 Golden mirror polished stainless steel

HANDRAILS

Stainless Steel



**HR62**  
Square silver brushed



**HR62**  
Square golden mirror polished stainless steel



**HR64**  
Bended silver brushed  
EN81-70 compliant  
AS1735.12 compliant  
G compliant



**HR64**  
Bended golden mirror polished stainless steel



**HR65**  
Bended silver brushed



**HR65**  
Bended golden mirror polished stainless steel

Brushed stainless steel



**HR81**  
Self standing handrail  
Silver brushed



**HR81**  
Self standing handrail  
Golden brushed

Wood



**HR71\*\***  
Round  
Light Wood with brushed stainless steel fixings (WLF)



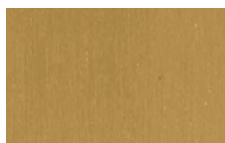
**HR71\*\***  
Round  
Dark Wood with brushed stainless steel fixings (WDF)

\*\* Golden brushed stainless steel fixings also available

# Materials

## WALLS

### Brushed stainless steel



**ST2\***  
Golden



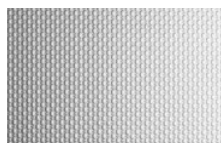
**ST5\***  
Copper

### Satin stainless steel



**MP6**  
Silver

### Textured stainless steel



**TS2\***  
Flemish Linen

\* Available also for front wall

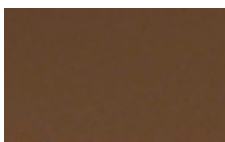
### Mirror polished stainless steel



**MP1\***  
Silver



**MP2\***  
Golden



**MP4\***  
Copper



**MP5\***  
Black

### Indirect steel



**ST21S\***  
Silver

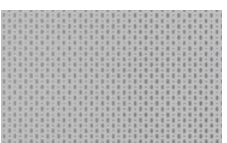


**ST21G\***  
Golden

### Etched stainless steel



**ST26S**  
Silver Swing



**ST28S**  
Silver Pop



**ST31S**  
Silver High-rise



**ST32S**  
Silver Pleat



**ST33S**  
Silver Curve



**ST34S**  
Silver Diamond



**ST36S**  
Silver Graphics



**ST37S**  
Silver Chain



**ST38S**  
Silver Ornament



**ST39SB**  
Bamboo



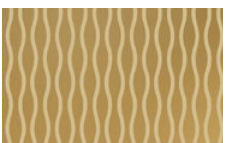
**ST40S**  
Silver Polygon



**ST41S**  
Silver Hexagon



**ST42S**  
Silver Circle



**ST26G**  
Golden Swing



**ST28G**  
Golden Pop



**ST31G**  
Golden High-rise



**ST32G**  
Golden Pleat



**ST33G**  
Golden Curve



**ST34G**  
Golden Diamond



**ST36G**  
Golden Graphics



**ST37G**  
Golden Chain



**ST38G**  
Golden Ornament



WALLS

Etched stainless steel



**ST31C**  
Copper High-Rise



**ST36C**  
Copper Graphics



**ST39CB**  
Copper Bamboo



**ST40C**  
Copper Polygon



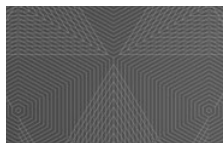
**ST41C**  
Copper Hexagon



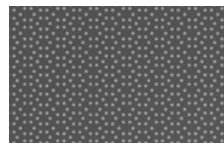
**ST42C**  
Copper Circle



**ST40B**  
Black Polygon



**ST41B**  
Black Hexagon



**ST42B**  
Black Circle

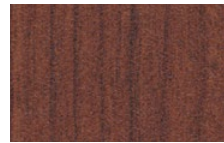
Wood pattern laminate



**L88**  
Cane



**L89**  
Sand Oak



**L90**  
Cherry

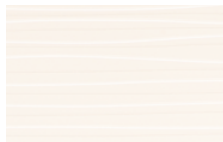


**L91**  
Colorado White

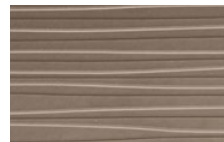
3D laminate



**L101**  
Black



**L102**  
Cream White



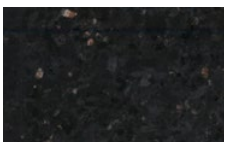
**L103**  
Cappuccino



**L104**  
Strawberry Red

FLOORS

Real stone



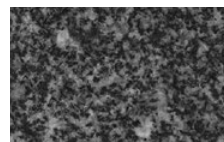
**M3R**  
Black Golden Sand



**G1R**  
Rose Black

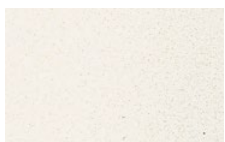


**G2R**  
Green Black

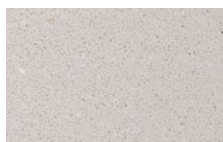


**G4R**  
Gray Black

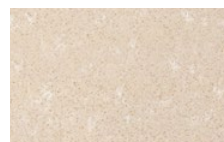
Artificial stone



**M4R**  
Natural White



**M5R**  
Pebble Gray



**M7R**  
Light Sand



**M8R**  
Shell White

# Accessories and materials

## CEILING



**CL151**

Lighting: **LED panel**

Finishing: **ST4** Silver brushed stainless steel

**MP2** Golden mirror polished stainless steel

Diffuser finishing:



Satin



Geometric



Bamboo



**CL162**

Direct lighting: **LED spot lighting**

Indirect lighting: **LED tubes**

Suspending panel finishing:

**MP1** Silver mirror polished stainless steel

**MP2** Golden mirror polished stainless steel

Back panel finishing: **PP10** White painted RAL9010



**CL181**

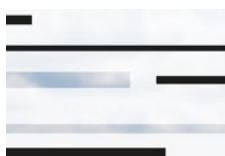
Lighting: **LED stripe, wall washer lighting**

Finishing: **MP1** Silver mirror polished stainless steel

**MP2** Golden mirror polished stainless steel

## WALLS

### Patterned glass



**G5**  
Silver Flow



**G8**  
Blue Flow



**G10**  
Magic Twist

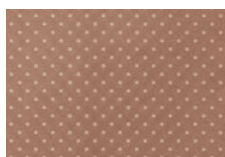


**G11**  
Classic Bamboo



**G101**  
Mirror Stripes

### Colored glass



**G102**  
Copper Mirror



**G103**  
Ocean Blue



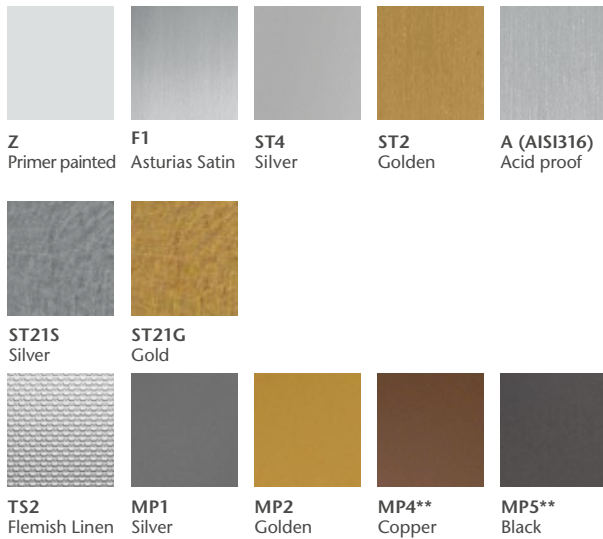
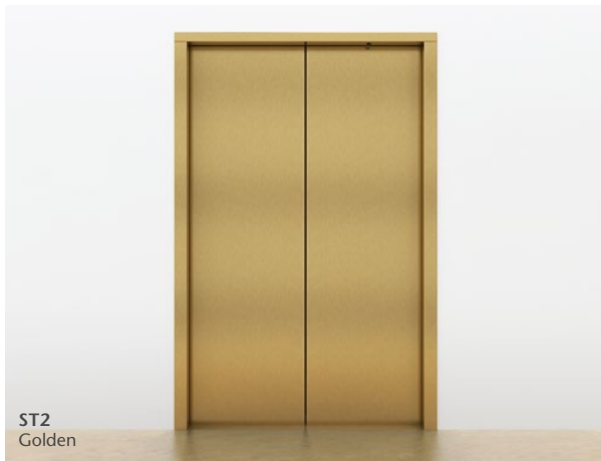
**G104**  
Bronze



**G107**  
Black Pearl

# Materials

## Steel

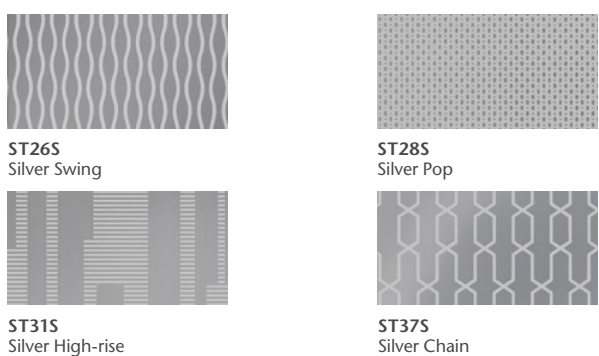


## Painted steel

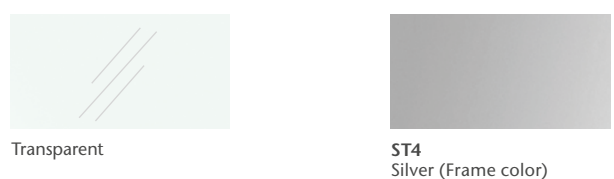
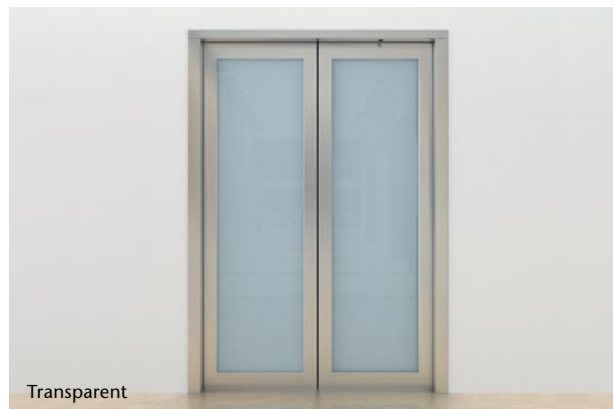


\*\* Only available for car door

## Etched stainless steel

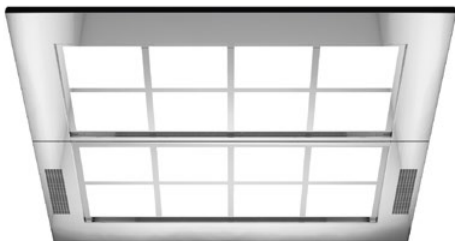


## Glass



# Accessories

## CEILING

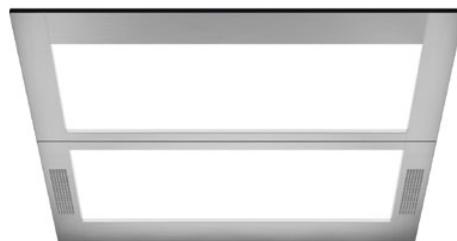


**CL70**

Lighting: LED tubes

Finishing: ST4 Silver brushed stainless steel

MP1 Silver mirror polished stainless steel

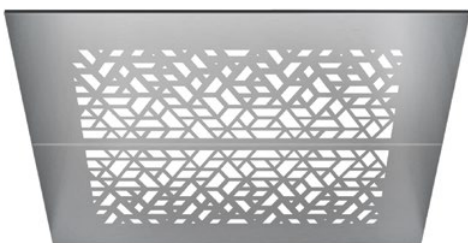


**CL71**

Lighting: LED tubes

Finishing: PP10 White painted RAL9010

ST4 Silver brushed stainless steel

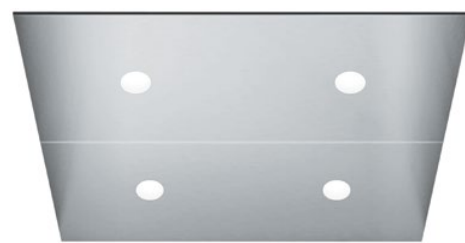


**CL72**

Lighting: LED tubes

Finishing: PP10 White painted RAL9010

ST4 Silver brushed stainless steel



**CL80**

Lighting: LED spot

Finishing: PP10 White painted RAL9010

ST4 Silver brushed stainless steel

MP1 Silver mirror polished stainless steel



**CL88**

Lighting: LED spot

Finishing: ST4 Silver brushed stainless steel

MP1 Silver mirror polished stainless steel

MP2 Golden mirror polished stainless steel



**CL91**

Lighting: LED tubes

Finishing: PP10 White painted RAL9010

ST4 Silver brushed stainless steel



**CL94**

Lighting: LED tubes

Finishing: PP10 White painted RAL9010

ST4 Silver brushed stainless steel



**CL95**

Lighting: LED tubes

Finishing: ST4 Silver brushed stainless steel

MP1 Silver mirror polished stainless steel





# Accessories

## CEILING



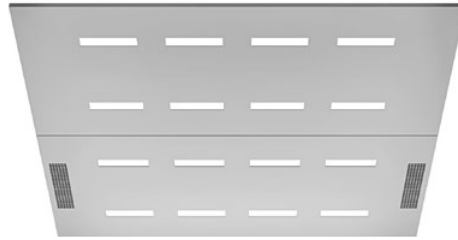
**CL97**

Lighting: **LED square**

Finishing: **ST4 Silver brushed stainless steel**

**MP1 Silver mirror polished stainless steel**

**MP2 Golden mirror polished stainless steel**



**CL103**

Lighting: **LED tubes**

Finishing: **PP10 White painted RAL9010**

**ST4 Silver brushed stainless steel**



**CL151**

Lighting: **LED panel**

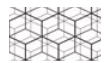
Finishing: **ST4 Silver brushed stainless steel**

**MP2 Golden mirror polished stainless steel**

Diffuser finishing:



Satin



Geometric



Bamboo



**CL162**

Direct lighting: **LED spot lighting**

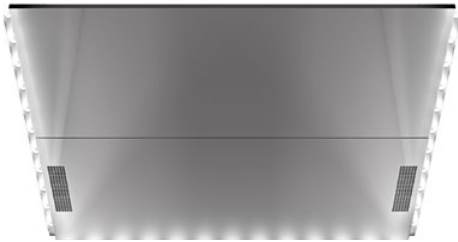
Indirect lighting: **LED tubes**

Suspending panel finishing:

**MP1 Silver mirror polished stainless steel**

**MP2 Golden mirror polished stainless steel**

Back panel finishing: **PP10 White painted RAL9010**



**CL181**

Lighting: **LED stripe, wall washer lighting**

Finishing: **MP1 Silver mirror polished stainless steel**

**MP2 Golden mirror polished stainless steel**



**CL195**

Direct lighting: **LED spot**

Indirect lighting: **LED strip**

Center panel finishing: **PP10 White painted RAL9010**

Back panel finishing: **PP10 White painted RAL9010**



**CL196**

Direct lighting: **LED spot**

Indirect lighting: **LED strip**

Center panel finishing: **PP10 White painted RAL9010**

Side panel finishing: **PP10 White painted RAL9010**

**ST4 Silver brushed stainless steel**

**MP1 Silver mirror polished stainless steel**

**MP2 Golden mirror polished stainless steel**



# Accessories

## HANDRAILS

### Aluminium



**HR31**  
Round aluminium tube  
with black plastic end caps



**HR34**  
Round curved aluminium tube  
with black plastic end caps

### Stainless Steel



**HR61**  
Round silver brushed



**HR61**  
Round golden mirror polished  
stainless steel



**HR62**  
Square silver brushed



**HR62**  
Square golden mirror polished  
stainless steel



**HR64**  
Bended silver brushed  
EN81-70 compliant  
AS1735.12 compliant  
G compliant



**HR64**  
Bended golden mirror polished  
stainless steel



**HR65**  
Bended silver brushed



**HR65**  
Bended golden mirror polished  
stainless steel

### Brushed stainless steel



**HR24R**  
Curved ends silver brushed



**HR81**  
Self standing handrail  
Silver brushed



**HR81**  
Self standing handrail  
Golden brushed

### Wood



**HR71\*\***  
Round  
Light Wood with brushed  
stainless steel fixings (WLF)



**HR71\*\***  
Round  
Dark Wood with brushed stainless  
steel fixings (WDF)

\*\* Golden brushed stainless steel fixings  
also available

# Materials

## WALLS

### Painted steel



**PP10\***  
Pure White



**PP18\***  
Linen Brown



**PP20\***  
Wool Gray



**PP22\***  
Fresh Green

\* Available for front wall

### Metallic painted steel



**METP1\***  
Champagne



**METP2\***  
Cosmo Red

### Brushed stainless steel



**ST4\***  
Silver



**ST2\***  
Golden



**ST5\***  
Copper

### Scotch brite steel



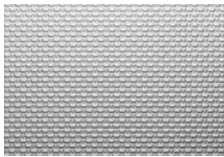
**F1\***  
Asturias Satin

### Satin stainless steel



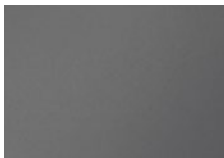
**MP6**  
Silver

### Textured stainless steel



**TS2\***  
Flemish Linen

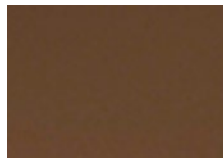
### Mirror polished stainless steel



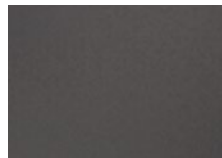
**MP1\***  
Silver



**MP2\***  
Golden



**MP4\***  
Copper



**MP5\***  
Black

# Materials

## WALLS

### Indirect steel



**ST21S\***  
Silver



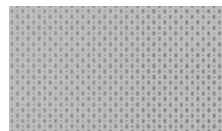
**ST21G\***  
Gold

\* Available for front wall

### Etched stainless steel



**ST26S**  
Silver Swing



**ST28S**  
Silver Pop



**ST31S**  
Silver High-rise



**ST32S**  
Silver Pleat



**ST33S**  
Silver Curve



**ST34S**  
Silver Diamond



**ST36S**  
Silver Graphics



**ST37S**  
Silver Chain



**ST38S**  
Silver Ornament



**ST39SB**  
Bamboo



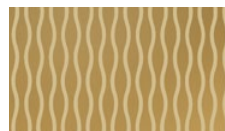
**ST40S**  
Silver Polygon



**ST41S**  
Silver Hexagon



**ST42S**  
Silver Circle



**ST26G**  
Golden Swing



**ST28G**  
Golden Pop



**ST31G**  
Golden High-rise



**ST32G**  
Golden Pleat



**ST33G**  
Golden Curve



**ST34G**  
Golden Diamond



**ST36G**  
Golden Graphics



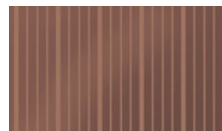
**ST37G**  
Golden Chain



**ST38G**  
Golden Ornament



**ST31G**  
Copper High-Rise



**ST36C**  
Copper Graphics



**ST39CB**  
Copper Bamboo



**ST40C**  
Copper Polygon



**ST41C**  
Copper Hexagon



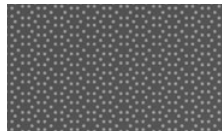
**ST42C**  
Copper Circle



**ST40B**  
Black Polygon



**ST41B**  
Black Hexagon



**ST42B**  
Black Circle



WALLS

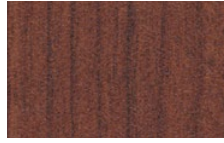
Wood pattern laminate



L88  
Cane



L89  
Sand Oak



L90  
Cherry

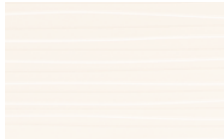


L91  
Colorado White

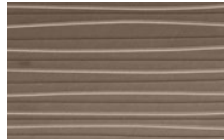
3D laminate



L101  
Black



L102  
Cream White



L103  
Cappuccino

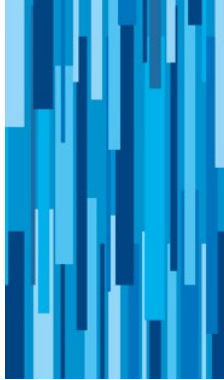


L104  
Strawberry Red

Patterned glass



G5  
Silver Flow



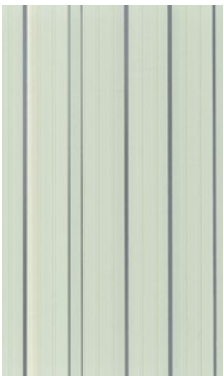
G8  
Blue Flow



G10  
Magic Twist

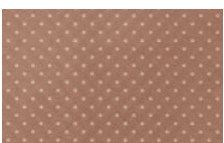


G11  
Classic Bamboo



G101  
Mirror Stripes

Colored glass



G102  
Copper Mirror



G103  
Ocean Blue



G104  
Bronze

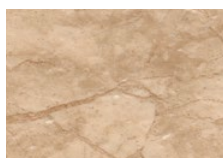


G107  
Black Pearl

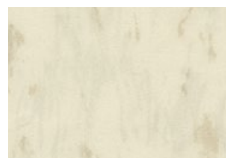
# Materials

## FLOORS

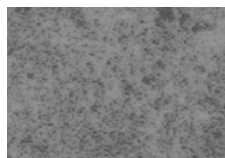
### PVC



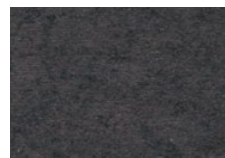
**D-6**  
Light Brown



**D24**  
Moon White



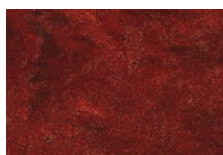
**D25**  
Rocky Gray



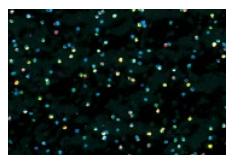
**D26**  
Lava Stone



**D27**  
Saturn Brown



**D29**  
Mars Red



**D30**  
Galaxy



**D31**  
Bamboo

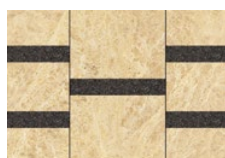
### Patterned PVC



**DG01**  
Brownly



**DG02**  
Chessboard



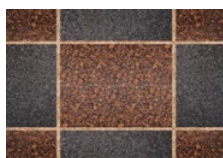
**DG03**  
Puzzle Soft



**DG04**  
Puzzle Bright

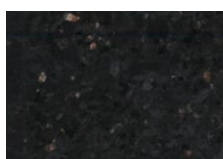


**DG05**  
Legno



**DG06**  
Blusher

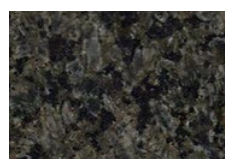
### Real stone



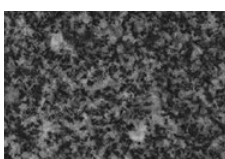
**M3R**  
Black Golden Sand



**G1R**  
Rose Black



**G2R**  
Green Black

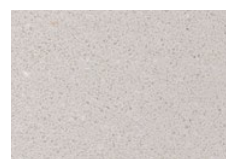


**G4R**  
Gray Black

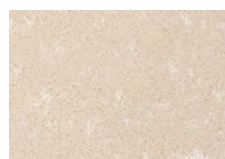
### Artificial stone



**M4R**  
Natural White



**M5R**  
Pebble Gray

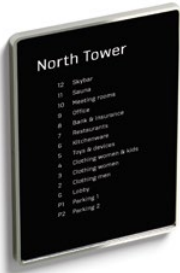


**M7R**  
Light Sand



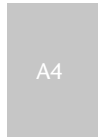
**M8R**  
Shell White

TENANT DIRECTORY

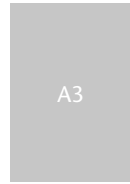


The printed tenant directory is completely customizable and can be easily updated according to the customer's needs.

Sizes



TD1



TD2

Directories can be installed either vertically or horizontally.

**TD1**  
Frame finishing: satin aluminum  
(only one finishing in SOC)

DIGITAL INFO SCREEN



**IS08**  
Standard version, 8.4" display  
Surface mounted



**IS15**  
Premium version, 15" display  
Surface mounted



Media screen  
Flush mounted

Additional features may be available. Consult your sales representative for more information.

Frame finishing: satin or mirror polished

Media screen  
Surface mounted

BUFFER RAILS

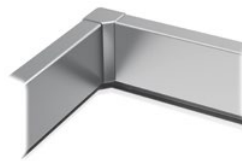


**BR1**  
Steel

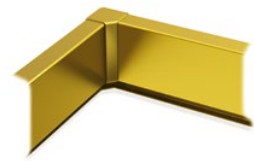


**BR1**  
Wood

SKIRTING

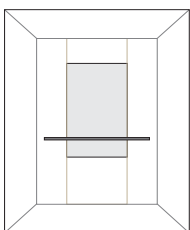


**ST4**  
Silver

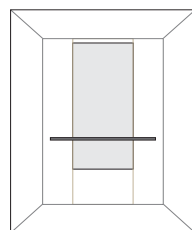


**ST2**  
Gold

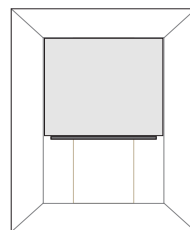
MIRRORS



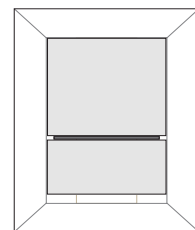
**MR1**  
Partial width, partial height



**MR1**  
Partial width, medium height



**MR1**  
Full width, partial height



**MR1**  
Full width, full height

KONE provides innovative and eco-efficient solutions for elevators, escalators, automatic building doors and the systems that integrate them with today's intelligent buildings.

We support our customers every step of the way: from design, manufacturing and installation to maintenance and modernization. KONE is a global leader in managing the smooth flow of people and goods throughout buildings.

This makes us a reliable partner throughout the life cycle of buildings. We are fast, flexible, and we have a well-deserved reputation as a technology leader, with such innovations as KONE MonoSpace®, KONE NanoSpace™ and KONE UltraRope®.

KONE employs over 55,000 dedicated experts to serve you globally and locally.

## KONE CORPORATION

### Head office

Kartanontie 1  
P.O. Box 8  
FI-00331 Helsinki  
Finland  
Tel. +358 (0)204 751

### Corporate offices

Keilasatama 3  
P.O. Box 7  
FI-02151 Espoo  
Finland  
Tel. +358 (0)204 751

[www.kone.com](http://www.kone.com)